

# MCAS Miramar Construction



Christopher Manis  
Deputy S-4, MCAS Miramar

PV streetlights ongoing, and they save ~750 KW-hr per year each...



342,000 KW-hrs per year from this carport...



...enough to power a 35Ksf bldg...

LEED Gold clubhouse ...”green” and sustainable construction...





# Youth and Teen Center

- **\$8.5 million facility**
- **20,800 sq ft**
- **Proposed LEED Gold facility**
- **Capacity of 64,000 youth and teen visits**





# Heating & Hot Water Boiler Replacement

## 1. Resources Saved

- ~65,000 therms

## 2. Money Saved

- \$65K/yr in gas expense

## 3. Description & Cost

- **Replace 50+ heating and domestic hot water (DHW) systems from the late '90's. The DHW system will incorporate tankless water heaters and solar thermal applications.**

- **Start: Aug 2009**
- **Finish: Aug 2010**
- **Cost: \$5M**

Traditional DHW system



(OLD) heating boilers



Tankless water Heaters



Solar Thermal

(NEW) state-of-the-art



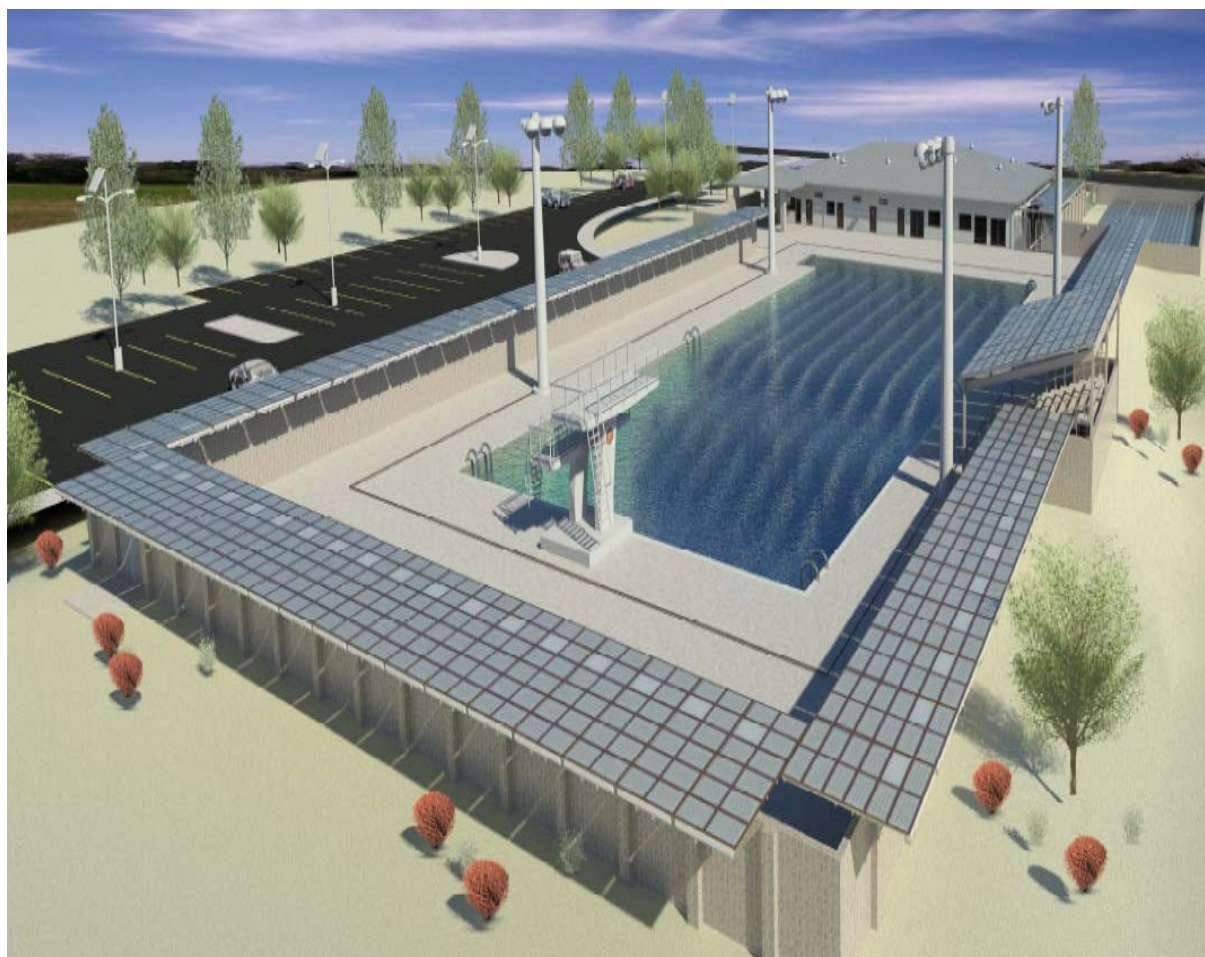


# P-164 Construct Training Tank

**Cost: \$9,123,862**

**Start Date: 6 April 2009**

**Projected Completion  
Date: 28 October 2010**





# MCAS Miramar Construction Agenda

- MILCON \$767.43M
- FSRM \$29.93M
- DEMOLITION \$2.6M



# MCAS Miramar MILCON FY 11

P-152	PARKING APRON TAXIWAY EXPANSION (MV-22)	\$70.4	2011	2012	Design
P-185	HANGAR 4 (MV-22)	\$35.6	2011	2013	Design
P-192	MAINTENANCE HANGAR 7(MV-22)	\$95.8	2011	2013	Design
P-303	INSTALL PHOTOVOLTAIC SYSTEM ON BLDG 7209 ROOF (ECIP)	\$5.4	2011	2011	Planned



# MCAS Miramar MILCON FY 12

P-189	OPERATIONS AND TRAINING FACILITY (GTF)	\$15.6	2012	2013	Validation
P-302	INSTALL PHOTOVOLTAIC SYSTEM BLDG 2660/2661 PARKING LOT (ECIP)	\$10.8	2012	2012	Planned



# MCAS Miramar MILCON FY 13

P-181	HANGAR 5 MODIFICATION (MV-22)	\$32.6	2013	2015	Validation
P-193	BEQ (GTF)	\$28.5	2013	2014	Planned
BM-01	AIR SURVIVAL TRAINING CENTER (BUMED)	\$17.4	2013	2014	Planned



# MCAS Miramar MILCON FY 14

P-137	WEST GATE EXPANSION	\$5.4	2014	2015	Planned
P-166	LEGAL SERVICES FACILITY	\$6.2	2014	2015	Planned
P-179	FLIGHT INSTRUCTION FACILITY	\$5.5	2014	2015	Planned
P-188	BEQ AND PARKING GARAGE	\$39.1	2014	2015	Planned
P-190	TACTICAL COMMUNICATIONS OPS & TRAINING FACILITY (GTF)	\$26.0	2014	2015	Planned
P-191	TACTICAL AIR CONTROL EQUIPMENT FACILITY (GTF)	\$8.0	2014	2015	Planned
P-194	ARMORY ADDITION (GTF)	\$5.0	2014	2015	Planned
P-197	INDOOR FITNESS FACILITY	\$7.6	2014	2015	Planned
P-209	RUNWAY 24L PAVEMENT UPGRADE	\$81.7	2014	2015	Planned
P-219	FAMILY READINESS FACILITY	\$23.6	2014	2015	Planned
P-220	EAST MIRAMAR FIRST RESPONDER STATION	\$7.1	2014	2015	Planned
P-225	TAXIWAY HOTEL EXTENSION	\$2.0	2014	2015	Planned



# MCAS Miramar MILCON FY 15

P-198	JSF MAINTENANCE HANGAR PHASE 1 (JSF)	\$95.1	2015	2017	Planned
P-199	COMPOSITE REPAIR/MAINTENANCE FACILITY (JSF)	\$64.2	2015	2017	Planned
P-205	PLESS AVE ROAD EXTENSION (JSF)	\$3.1	2015	2016	Planned
P-207	AIRCRAFT RINSE FACILITY (JSF)	\$2.0	2015	2016	Planned
P-210	SIMULATOR FACILITY (JSF)	INPG	2015	2016	Planned
P-223	CONSTRUCT RECEIVER BUILDING	\$7.6	2015	2016	Planned
P-224	CONSTRUCT TRANSMITTER BUILDING	\$7.8	2015	2016	Planned



# MCAS Miramar MILCON FY 16

P-201	JSF MAINTENANCE HANGAR PHASE 2 (JSF)	\$40.2	2016	2017	Planned
P-204	VEHICULAR BRIDGE (JSF)	\$5.8	2016	2017	Planned
P-213	CONSTRUCT RANGE INSTRUCTIONAL BUILDING	\$1.7	2016	2017	Planned
P-221	WASH RACKS (JSF)	INPG	2016	2017	Planned
P-222	VERTICAL LANDING PADS (JSF)	INPG	2016	2017	Planned
P-215	RELOCATE OVERHEAD LINES	\$5.3	2016	2017	Planned
P-226	CONSTRUCT CHAPLAINS OFFICE	INPG	2016	2017	Planned



# MCAS Miramar MILCON FY 17

P-202	JSF MAINTENANCE HANGER PHASE 3 (JSF)	\$87.6	2017	2018	Planned
P-206	HANGAR 0 APRON EXPANSION (MV-22)	INPG	2017	2019	Planned
P-216	RUNWAY 24R PAVEMENT UPGRADE	\$143	2017	2018	Planned
P-218	HELIPAD CONSTRUCTION AND APRON EXPANSION (JSF)	INPG	2017	2018	Planned



# FSRM FY 11

MI1101M	REPAIR TAXIWAY LIGHTS	\$2.2	2011	2012	Planned
MI1104M	REPAIR ROOF BLDG 20300	\$0.16	2011	2012	Design
MI1105M	REPAIR MISSILE ROAD	\$1.8	2011	2012	Planned
MI1107M	REPAIR HVAC BLDG 20300	\$0.87	2011	2012	Preaward
MI1113R	CONSTRUCT BATTALION SQUADRON HQ BLDG 6016	\$0.31	2011	2012	Planned



# FSRM FY 12

MI1201M	ABATE LEAD PISTOL RANGE 21302	\$0.10	2012	2012	Planned
MI1202M	ABATE LEAD PISTOL RANGE 21303	\$0.09	2012	2012	Planned
MI1203M	REPAIR FIRE PROTECTION SYSTEM HANGAR 3 BLDG 9500	\$0.86	2012	2012	Planned
MI1211R	CONSTRUCT AMMO TRUCK PARKING	\$0.28	2012	2013	Planned
MI1217R	CONSTRUCT CARPORTS BLDG 6002	\$0.69	2012	2013	Planned
MI1222R	CONSTRUCT LATRINE AT PISTOL & RIFLE RANGE	\$0.37	2012	2013	Planned
MI1256R	CONSTRUCT POL ADMIN & OPS FACILITY (DLA)	\$0.69	2012	2013	Planned



# Demolition FY 11

MI1171M	DEMOLISH BUILDING 1271T	\$0.04	2011	2011	Planned
MI1172M	DEMOLISH BUILDING 1272T	\$0.04	2011	2011	Planned
MI1173M	DEMOLISH BUILDING 2003T	\$0.04	2011	2011	Planned
MI1181M	DEMOLISH BUILDING 2740T	\$0.06	2011	2011	Planned
MI1174M	DEMOLISH BUILDING 9022	\$0.03	2011	2011	Planned
MI1175M	DEMOLISH BUILDING 9272	\$0.05	2011	2011	Planned
MI1182M	DEMOLISH BUILDING 9278T	\$0.10	2011	2011	Planned
MI1177M	DEMOLISH BUILDING 9539	\$0.04	2011	2011	Planned
MI1176M	DEMOLISH BUILDING 9540	\$0.04	2011	2011	Planned
MI1178M	DEMOLISH BUILDING 9604	\$0.04	2011	2011	Planned
MI1179M	DEMOLISH BUILDING 9623	\$0.04	2011	2011	Planned
MI1180M	DEMOLISH BUILDING 9624	\$0.42	2011	2011	Planned
MI0971M	DEMOLISH TEMPORARY LODGING FACILITY 2516	\$0.60	2011	2012	Planned
MI0972M	DEMOLISH TEMPORARY LODGING FACILITY 2517	\$0.70	2011	2012	Planned



# Demolition FY 12

MI0973M	DEMOLISH TEMPORARY LODGING FACILITY 2518	\$0.06	2012	2013	Planned
MI0974M	DEMOLISH TEMPORARY LODGING FACILITY 2519	\$0.70	2012	2013	Planned
MI1271M	DEMOLISH GAS STATION BUILDING 6214	\$0.90	2012	2014	Planned
MI1272M	DEMOLISH BUILDING 6606	\$0.017	2012	2013	Planned
MI1273M	DEMOLISH BUS SHELTER BUILDING 1128	\$0.005	2012	2013	Planned
MI1274M	DEMOLISH STEAM PLANT BUILDING 7212	\$0.52	2012	2013	Planned
MI1275M	DEMOLISH BUILDING 8006T	\$0.10	2012	2013	Planned
MI1276M	DEMOLISH BUILDING 8009T	\$0.04	2012	2013	Planned
MI1277M	DEMOLISH BUILDING 9618	\$0.01	2012	2013	Planned
MI1278M	DEMOLISH GUARD SHACK BUILDING 21146D	\$0.005	2012	2013	Planned
MI1280M	DEMOLISH GARAGE BUILDING 21743D	\$0.02	2012	2013	Planned
MI1281M	DEMOLISH BUS SHELTER BUILDING 1129	\$0.005	2012	2013	Planned
MI1282M	DEMOLISH BUS SHELTER BUILDING 2107	\$0.007	2012	2013	Planned
MI1283M	DEMOLISH BUS SHELTER BUILDING 7101	\$0.007	2012	2013	Planned
MI1284M	DEMOLISH BUS SHELTER BUILDING 8112	\$0.007	2012	2013	Planned
MI1285M	DEMOLISH BUS SHELTER BUILDING 8124	\$0.002	2012	2013	Planned
MI1286M	DEMOLISH BUS SHELTER BUILDING 9102	\$0.007	2012	2013	Planned
MI1287M	DEMOLISH BUS SHELTER BUILDING 9109	\$0.006	2012	2013	Planned
MI1288M	DEMOLISH BUS SHELTER BUILDING 9114	\$0.007	2012	2013	Planned



# Questions

